

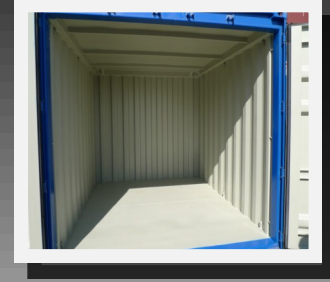


20' High Cube Offshore Container

20' x 8' x 9'6"

DNV/ISO Corner Castings

Corrugated Sides



Steel Floors

DNV Certification Note 2.7-1: Offshore Containers

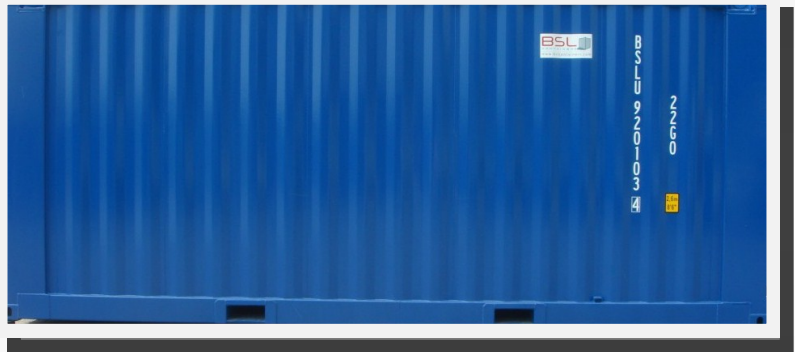
EN 12079: Offshore Containers

ISO 1161

The Customs Convention on Containers CCC/TIR

The Convention for Safety Containers CSC

Classification Society: Lloyd's Register



DNV/ISO Corner Casting

Stackable Container

Allows for any intermodal means of transportation

Handling Options: Forklift, Crane or Top Lift

Truck, Rail or Ocean Transport

Reduces Dray Costs

Includes

DNV Certified IWRC Wire Rope Lifting Sling

Equipped with Crosby Safety Pin Bow Shackles

And Flemish Steel Splice Terminations

Dimensions

L x W x H

20' x 8' x 9'6"

External

6058 mm

2438 mm

2896 mm

Internal

5888 mm

2330 mm

2562 mm

Door Opening: 2146 mm Width x 2512 mm Height

Ratings

Max Gross 20,000 kg

Payload 15,750 kg

Tare (+/- 2%) 4,250 kg

