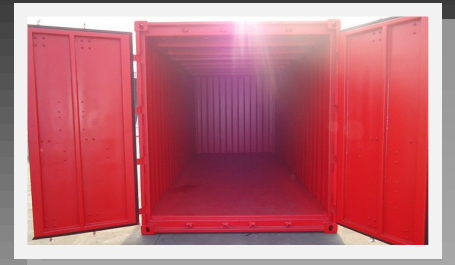




## 20' Offshore Container

20' x 8' x 8'6"

DNV/ISO Corner Castings  
Corrugated Sides



DNV Certification Note 2.7-1: Offshore Containers

Steel Floors

EN 12079: Offshore Containers

Integrated Door Holds

ISO/TC 104

The Customs Convention on Containers CCC/TIR

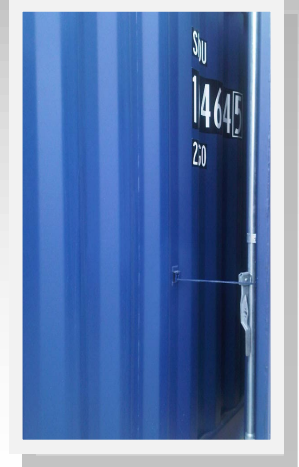
The Convention for Safety Containers CSC

Classification Society: Lloyd's Register

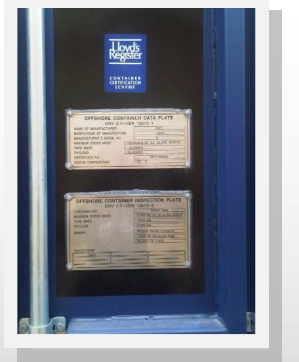
OFFSHORE  
13,540 kg  
29,850 lb  
3,540  
7,800  
10,000  
22,050  
30.9  
109

DRY VAN  
24,000 kg  
52,910 lb  
3,540 kg  
7,800 lb  
20,460 kg  
45,110 lb  
30.9 M<sup>3</sup>  
1091 FT<sup>3</sup>

Reversible  
Plates



Internally Accessible  
Grease Pins



Includes

DNV Certified IWRC Wire Rope Lifting Sling

Equipped with Crosby Safety Pin Bow Shackles

And Flemish Steel Splice Terminations



### Dimensions

L x W x H

20' x 8' x 8'6"

#### External

6058 mm (19' 10 1/2")  
2438 mm (8' 0")  
2591 mm (8' 6")

#### Internal

5890 mm (19' 3 7/8")  
2314 mm (7' 7 3/32")  
2268 mm (7' 5 9/32")

#### Capacity

30.9 Cu.m  
(1091 Cu. ft)

### Ratings

As ISO

24,000 kg 52,910 lb  
20,460 kg 45,110 lb  
3,540 kg 7,800 lb

As Offshore

Max Gross 29,840 lb 13,540 kg  
Payload 22,040 lb 10,000 kg  
Tare (+/- 2%) 7,800 lb 3,540 kg