

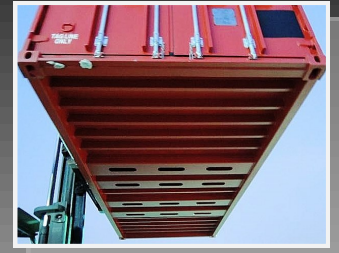


20' Offshore Container

20' x 8' x 8'6"

DNV/ISO Corner Castings

Flat Panel



DNV Certification Note 2.7-1: Offshore Containers

BS EN 12079: Offshore Containers

In support of IMO MSC/Circ. 860

ISO/TC 104

The Customs Convention on Containers CCC/TIR

The Convention for Safety Containers CSC

Classification Society: Lloyd's Register

Classification by Det Norske Veritas available by Special Order

Mobilization Packet :

Original Certificates and Full Data Book



DNV/ISO Corner Casting

Stackable Container

Allows for any intermodal means of transportation

Handling Options: Forklift, Crane or Top Lift

Truck, Rail, Commercial Ocean or barge



Includes

DNV Certified IWRC Wire Rope Lifting Sling

Equipped with Crosby Safety Pin Bow Shackles

And Flemish Splice, steel sleeves

DNV 2.7-1 / EN13414 / ASME B30.9

Uniquely numbered, tagged and certified

Dimensions

L x W x H

20' x 8' x 8'6"

External

6058 mm (20')

2438 mm (8' 0")

2591 mm (8' 6")

Internal

5865 mm (19' 2 57/64")

2218 mm (7' 3 5/16")

2223 mm (7' 3 33/64")

Capacity

29.4 Cu.m

(1038 Cu. ft)

Door Opening: 2,218 mm W x 2,198 mm H

Ratings

As ISO

24,000 kg 52,910 lb

19,850 kg 43,760 lb

4,150 kg 9,150 lb

As Offshore

Max Gross 31,200 lb 14,150 kg

Payload 22,050 lb 10,000 kg

Tare (+/- 2%) 9,150 lb 4,150 kg

